

HOROLOGICAL MACHINE N°1

MB&F

Operating instructions

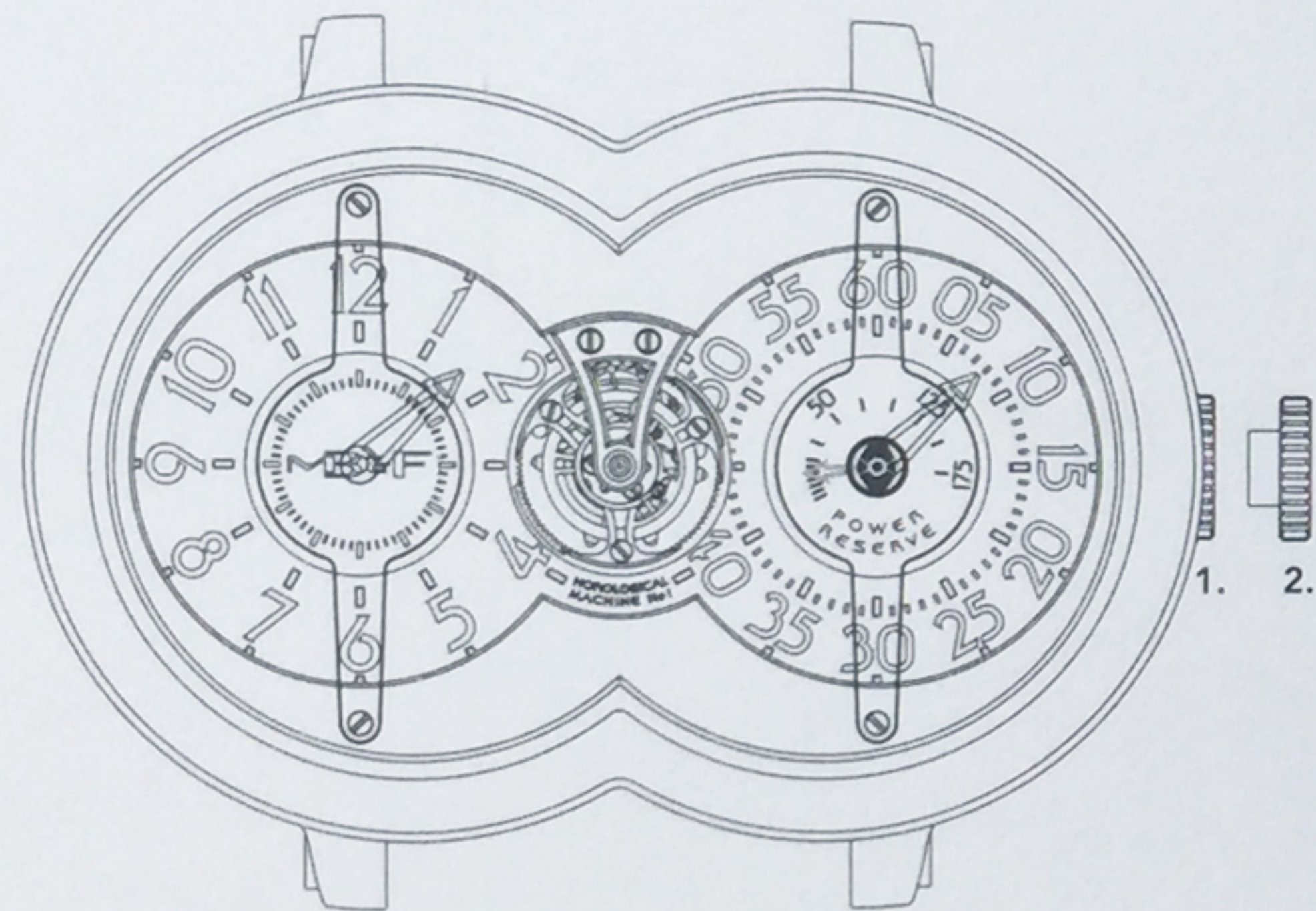
05

Removing the straps

07

Attaching the straps

10



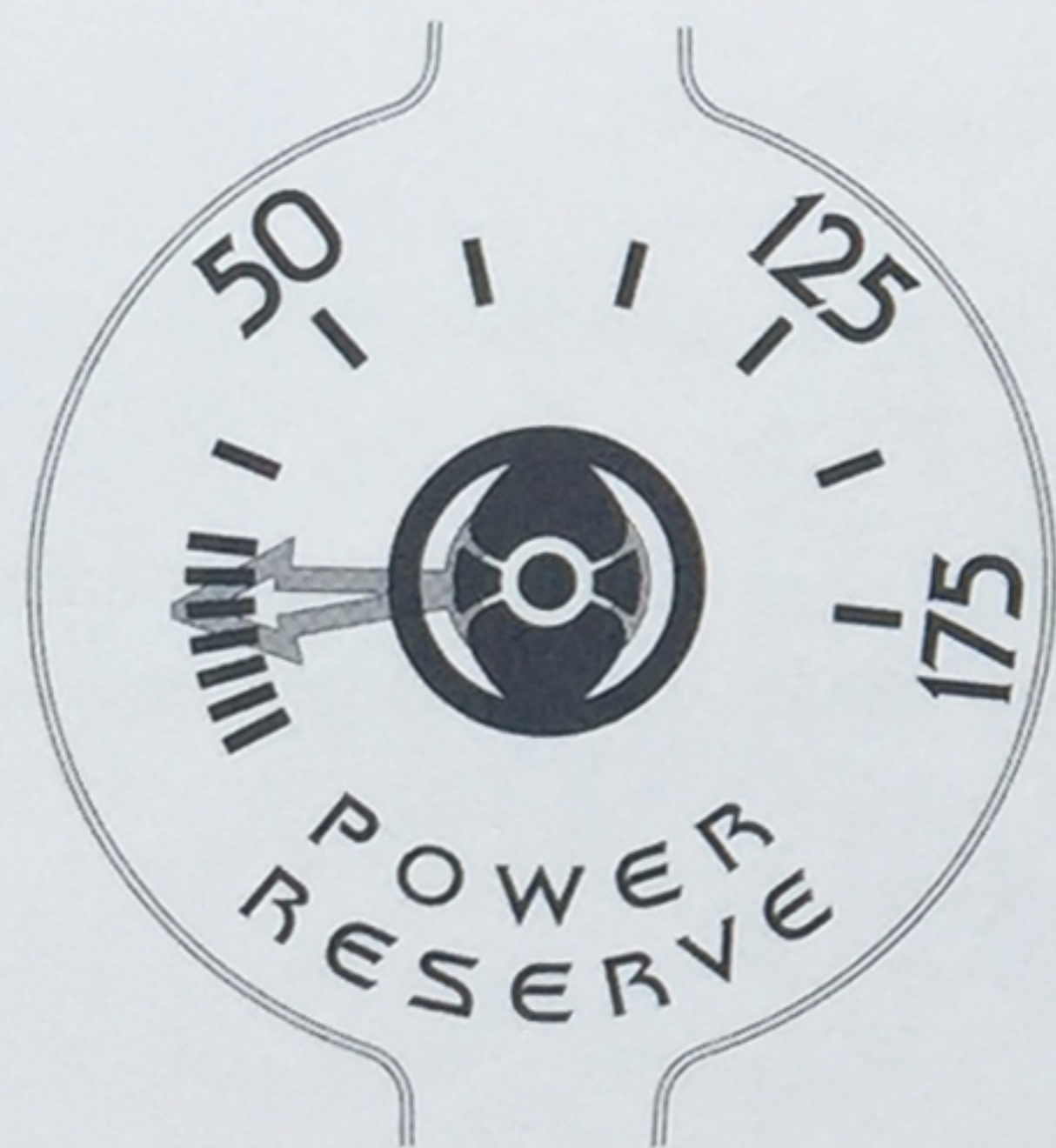
Operating instructions

The winding-crown has 2 positions:

1. Pushed-in position = normal position when wearing the watch and winding
2. Pulled-out position = Pull the winding crown out gently and turn the hands to the correct time. Push the winding crown back against the case when finished.

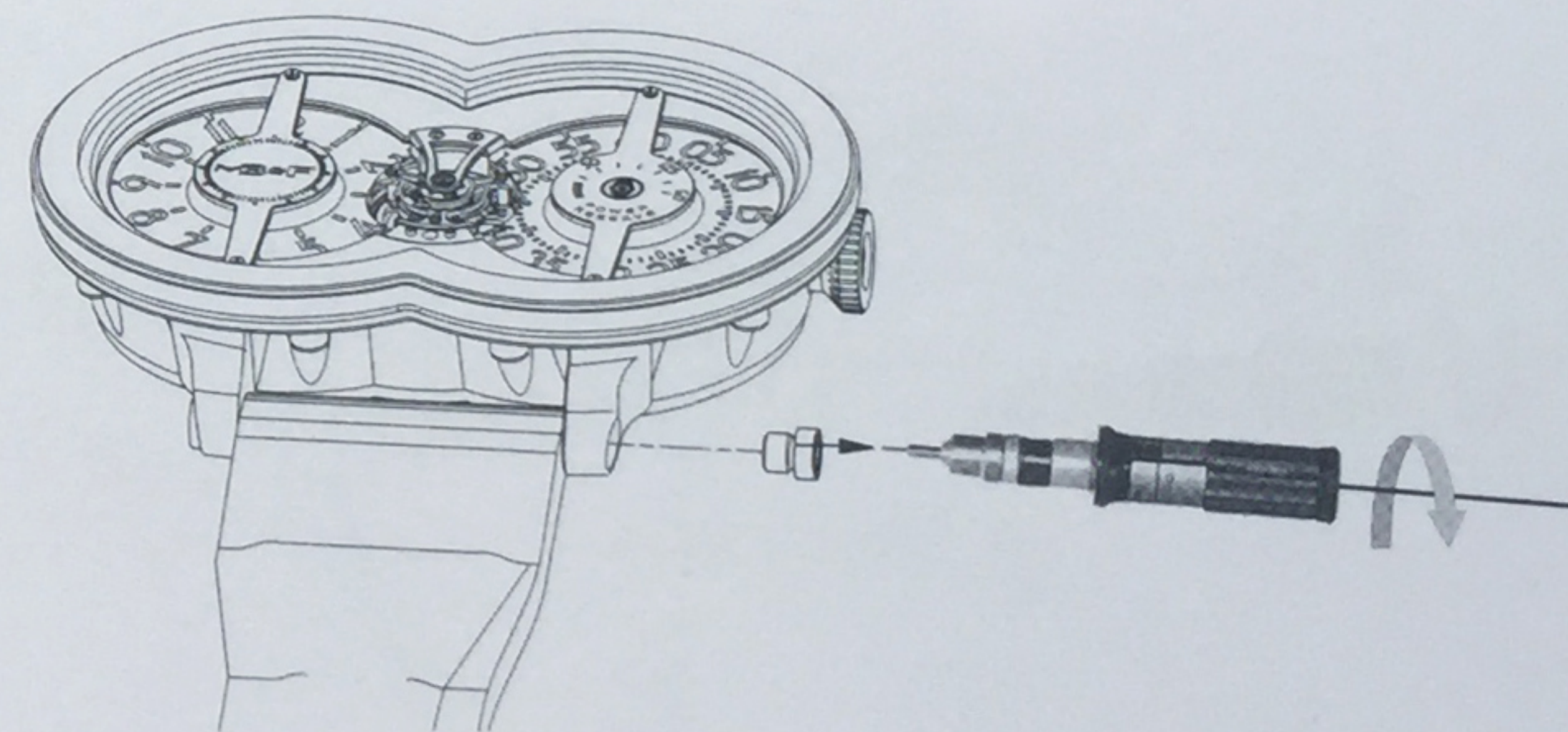
Your watch is equipped with an automatic movement. If it has stopped, give the winding-crown (in the push position) a few turns clockwise.

CAUTION — Power reserve

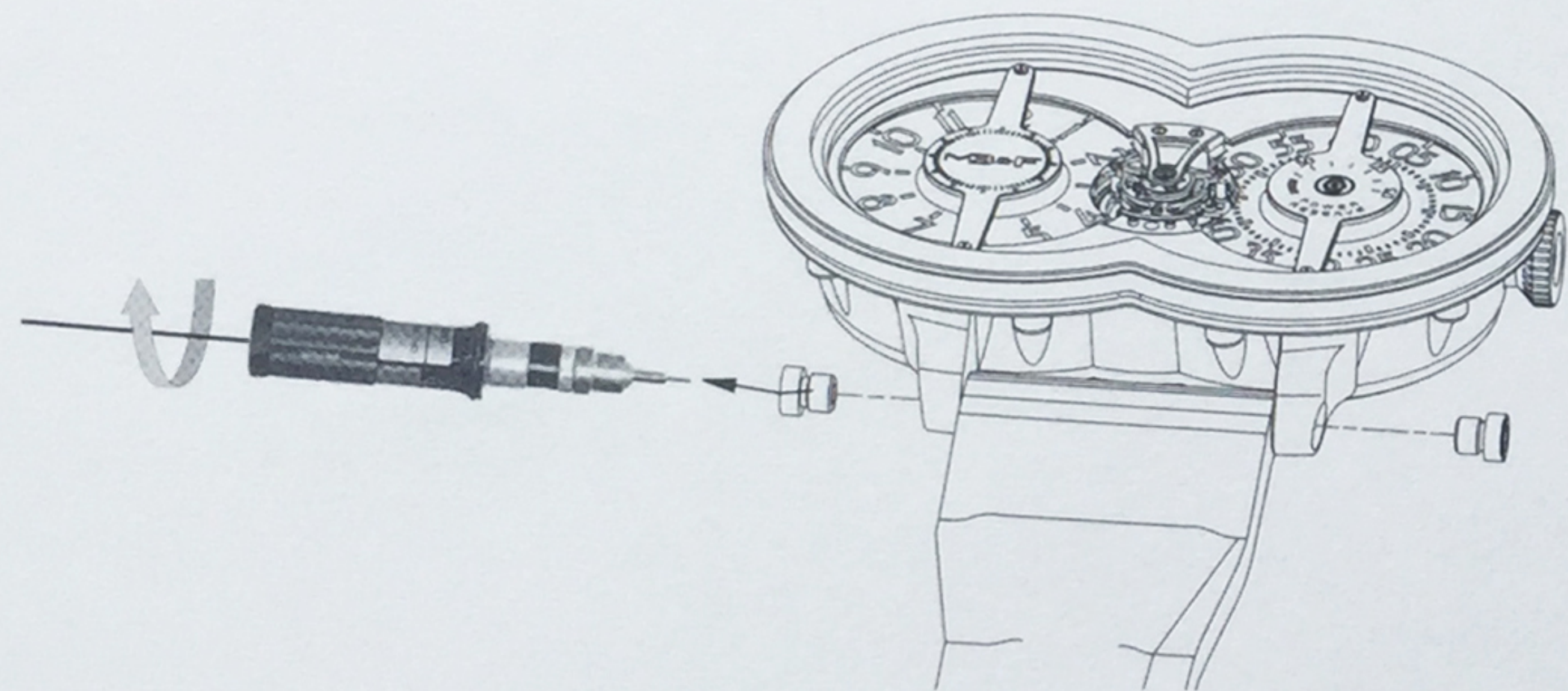


When fully wound, your watch has a minimum power reserve of 175 hours. To ensure optimal timekeeping, the watch should be wound manually via the crown when the power reserve indicator reaches the close-spaced graduations.

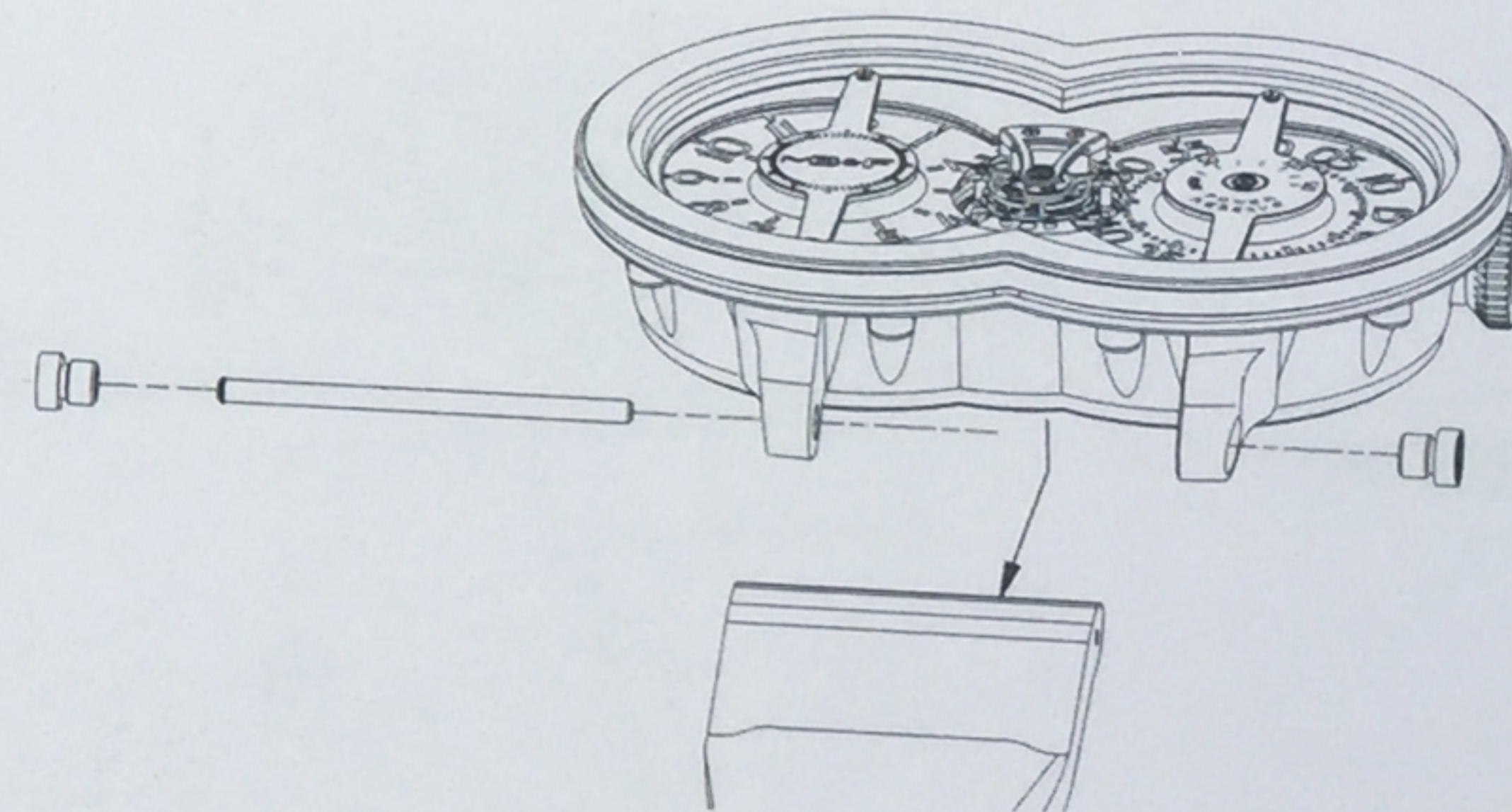
To change the strap — Removing strap



1. Remove the screw on the right-hand lug by turning anticlockwise with the supplied dynamometric screwdriver.

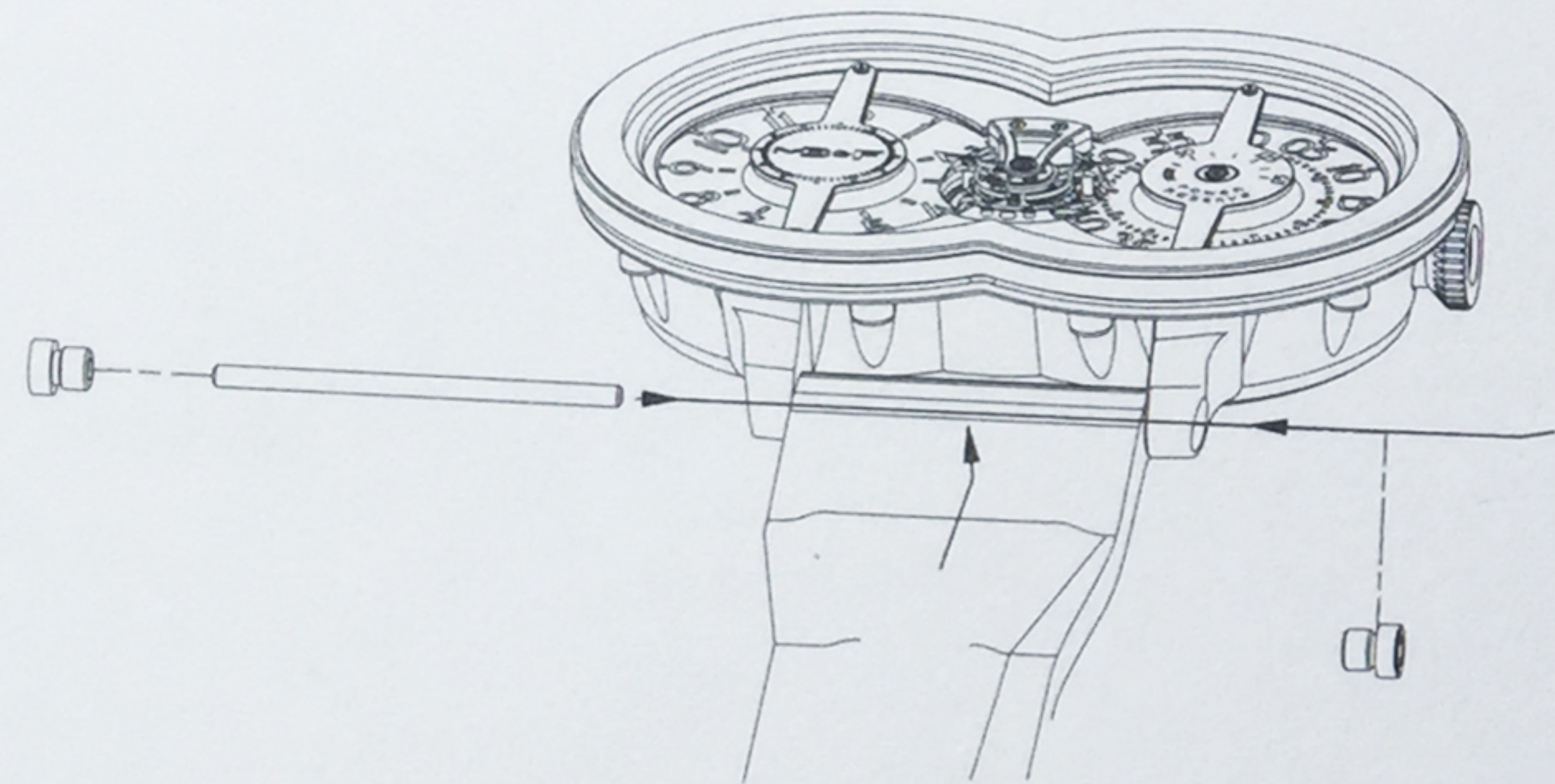


2. Remove the screw on the left-hand lug by turning anticlockwise with the supplied dynamometric screwdriver.

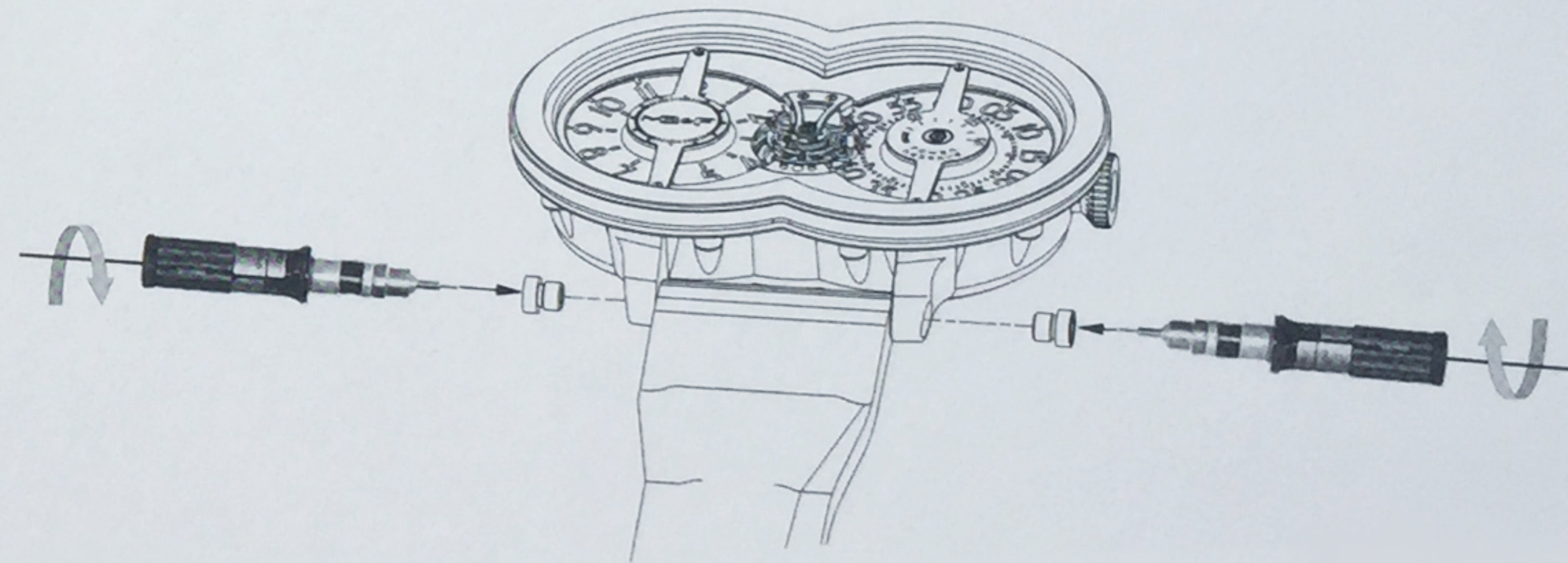


3. Push the central pin out from between the strap and the lugs and remove the strap. Repeat steps 1-3 on the other side of the case.

To change the strap — Attaching strap



4. Place the new strap between the lugs and slide the central pin through lugs and strap.



5. Screw-in the left and right-hand screws into the lugs by turning the dynamometric screwdriver in a clockwise direction. Take care not to force or over-tighten screws. Repeat steps 4-5 on the other side of the case.